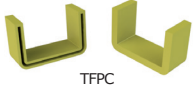
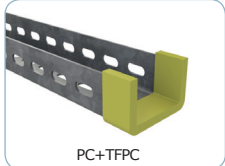


C-PC


TFPC



PC+TFPC

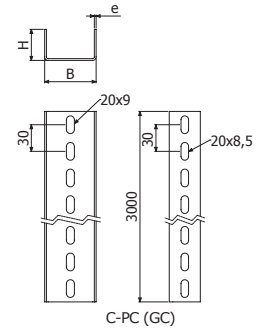
	B		H		e	GC	
	mm	inch	mm	inch	mm	REF.	kg/m
C-PC 3000	58	2 2/7"	35	1 3/8"	2	2/0229	1,84

TFPC PVC (2/14809)

C-PC + KAPC --> 2 x CT2 (2/14307 - i304)

C-PC + KLPC2 --> 2 x B2 (2/6792 - GC)

C-SR

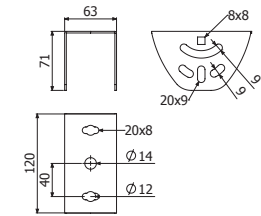
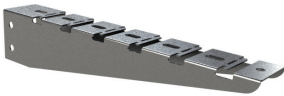


C-PC (GC)

KAPC


	e	GS		GC		i304		i316	
	mm	REF.	kg/ud	REF.	kg/ud	REF.	kg/ud	REF.	kg/ud
KAPC	2	2/1116	0,28	2/1117	0,29	2/18063	0,28	2/18393	0,28

PC/C-PC + KPC/KAPC --> 2 x CT2 (2/6793 - GS // 2/14307 - i304)


C-SR


C-SR



	B		e	H		A		CTA		GS		GC		i304		i316	
	mm	inch	mm	mm	inch	mm	inch	kg	lb	REF.	kg/ud	REF.	kg/ud	REF.	kg/ud	REF.	kg/ud
C-SR 100	100	4"	1,5	67	2 2/3"	30	1 1/6"	102	225	2/18543	0,23	2/18545	0,26	2/17815	0,23	2/18541	0,23
C-SR 150	150	6"	1,5	67	2 2/3"	30	1 1/6"	102	225	2/18544	0,29	2/18546	0,32	2/17816	0,29	2/18542	0,29
C-SR 200	200	8"	1,5	67	2 2/3"	30	1 1/6"	102	225	2/7264	0,36	2/3460	0,39	2/17817	0,47	2/18409	0,36
C-SR 300	300	12"	1,5	67	2 2/3"	30	1 1/6"	90	198	2/7265	0,49	2/1032	0,53	2/17818	0,49	2/18410	0,49
C-SR 400	400	16"	1,5	100	4"	60	2 2/8"	159	351	2/7266	0,81	2/1033	0,88	2/17819	0,81	2/18411	0,81
C-SR 500	500	20"	1,5	100	4"	60	2 2/8"	134	295	2/7267	0,97	2/1034	1,06	2/17820	0,97	2/18412	0,97
C-SR 600	600	24"	1,5	100	4"	60	2 2/8"	117	258	2/7268	1,14	2/1035	1,25	2/17821	1,14	2/18413	1,14

C-SR --> C-PC: 2/100 x CT2

